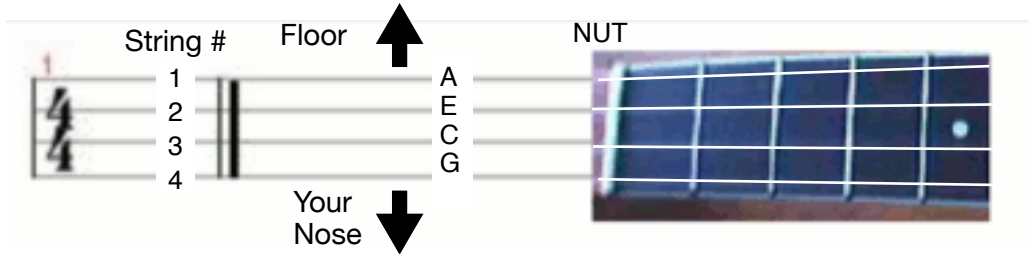


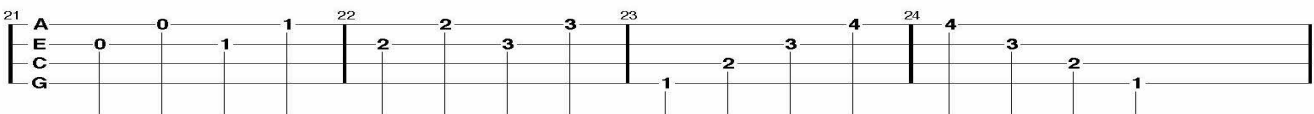
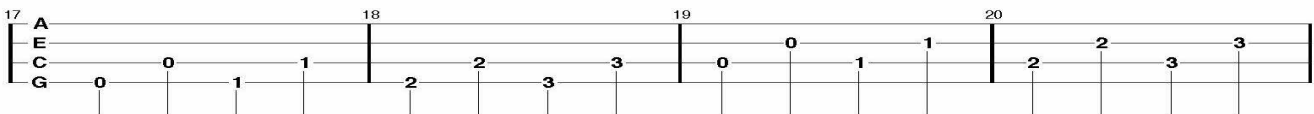
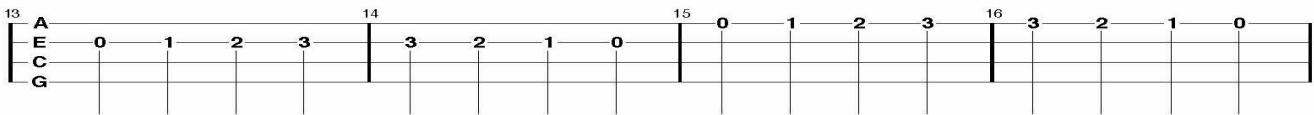
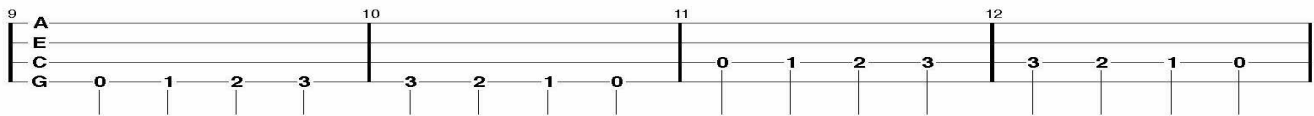
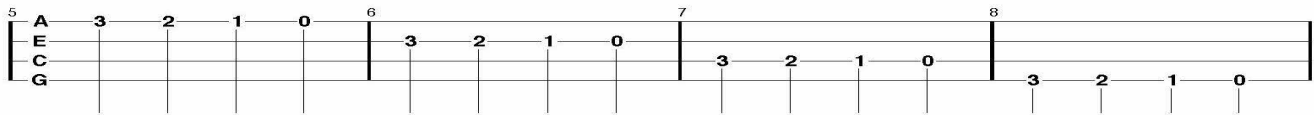
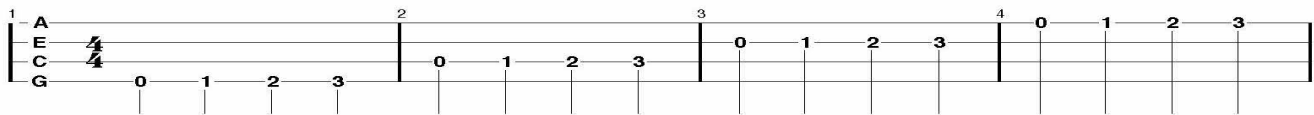
# How To Play Ukulele From TAB

© Tony Anthonisen - 2023

1. Here is a graphic of TAB lines next to the uke fretboard and the corresponding uke strings.
2. TAB Practice - **The Sweet Spots** — Pick above the sound hole - **Strum** where neck meets the body



3. Click on this link & play TAB for ALL Fiddle Tunes in this folder >>> [How to Read and Play Tab.](#)
4. Tremendous TAB Reference - <http://ukulelehunt.com/how-to-read-ukulele-tab/> - Be sure to see Part One - The Basics. The neat TAB to fretboard graphic above came from The Basics.



## C Scale Sheets and Scale Exercises

All scales =

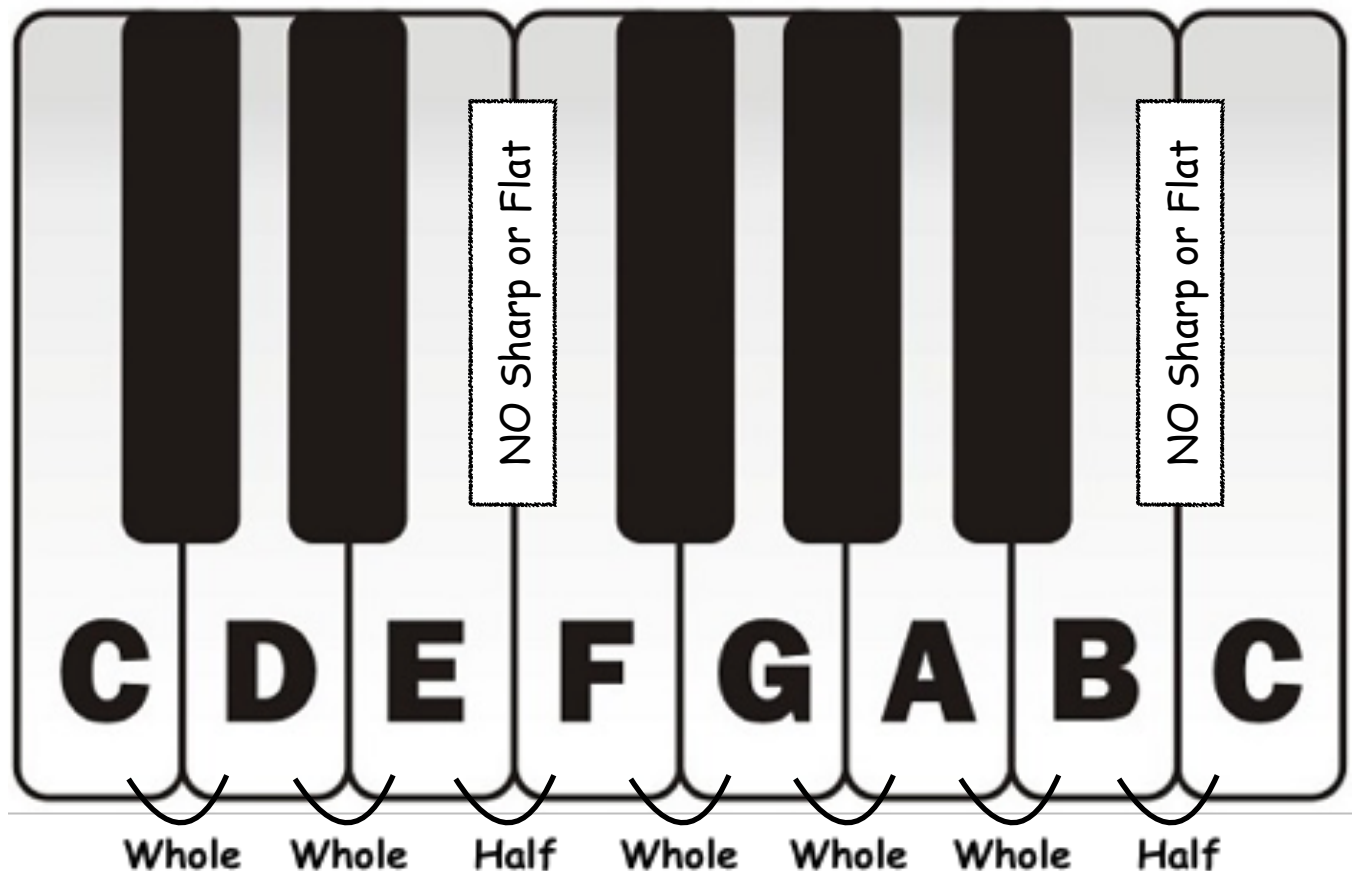
whole step – whole step – half step – whole step – whole step – whole step – half step

Simply = whole – whole – half – whole – whole – whole – half     or  
W W H W W W H

Here it is on a piano keyboard.

- ☑ Half because there is no sharp or flat between B and C, and E and F in the key of C Scale.
- ☑ However, the "whole – whole – half – whole – whole – whole – half" – W W H W W W H – scheme works in ALL keys.
- ☑ Just worry about the key of C and the C scale for now.

# C MAJOR SCALE



## C Scale in TAB

- ☑ Top line on this first sheet is the entire C scale on the ukulele C string.
- ☑ It is easy to see the note spacing when all the notes are on one string.
- ☑ Note spacing = whole – whole – half – whole – whole – whole – half = W W H W W W H

## Scale Exercises in TAB

**Ukulele TAB Scales**  
C Scale - whole, whole, half whole, whole, whole, whole half

TabEdited by Tony Anthonisen

1 A  
E 4  
C 4 0 2 4 5 7 9 11 12 12 11 9 7 5 4 2 0  
G

5 A  
E 0 1 3 0 2 3 3 2 0 3 1 0 2 0  
C 0 2 0 1 3 0 2 3 3 2 0 3 1 0 2 0  
G

9 A  
E 0 0 1 1 3 3 0 0 2 2 3 3  
C 0 0 2 2 0 0 1 1 3 3 0 0 2 2 3 3  
G

13 A  
E 3 3 2 2 0 0 3 3 1 1 0 0 2 2 0 0  
C 3 3 2 2 0 0 3 3 1 1 0 0 2 2 0 0  
G

17 A  
E 0 0 1 1 3 3 0 0 2 2 3 3 3 2 2 0 0 3 3 1 1 0 0 2 2 0 0  
C 0 0 2 2 0 0 1 1 3 3 0 0 2 2 3 3 3 2 2 0 0 3 3 1 1 0 0 2 2 0 0  
G

# Old Joe Clark

## Ukulele - Traditional - Key A

TablEdited by Tony Anthonisen - A Uke - Old Joe Clark - Easier.tef/pdf

Pickup A A Part E A D

1 A 2 3 4 5 6 7

8 A 9 10 11 12 13 14

15 A 16 17 18 19

Ukulele tablature for 'Old Joe Clark' (Part 1) in 4/4 time, Key A. The piece is divided into a Pickup A and an A Part. The A Part is further divided into measures 1-7, 8-14, and 15-19. Chord changes are indicated above the staff: A (measures 1-2), E (measure 5), A (measures 6-7), D (measure 7), E7 (measure 8), 1.A (measures 9-10), 2.A (measures 10-11), A (measures 11-12), B Part (measures 13-14), G (measures 15-16), A (measures 17-18), E7 (measures 19-20), 1.A (measures 21-22), and 2.A (measures 22-23). The tablature shows fingerings and fret numbers for each note on the four strings (A, E, C, G).

# Mississippi Sawyer

## Ukulele - Traditional - Key D

TablEdited by Tony Anthonisen

A Part D G

1 A 2 3 4 5

6 A 7 8 9 10

11 A 12 13 14 15

16 A 17 18 19

Ukulele tablature for 'Mississippi Sawyer' (Part 1) in 4/4 time, Key D. The piece is divided into an A Part and a B Part. The A Part is further divided into measures 1-5, 6-10, 11-15, and 16-19. Chord changes are indicated above the staff: A (measures 1-2), D (measures 2-3), G (measures 3-4), D (measures 6-7), A (measures 8-9), 1.D (measures 9-10), 2.D (measures 10-11), A (measures 12-13), D (measures 14-15), A (measures 16-17), 1.D (measures 18-19), and 2.D (measures 19-20). The tablature shows fingerings and fret numbers for each note on the four strings (A, E, C, G).

# Freight Train - 4 Chords - 4/4

Elizabeth Cotten

[1] Freight train, Freight train, [57] goin' so fast,  
Freight train, Freight train, [1] goin' so fast,  
[37] Please don't tell what [4] train I'm on  
So [1] they won't [57] know where I'm [1] gone.

[1] Freight train, Freight train, [57] goin' round the bend,  
Freight train, Freight train, [1] comin' back again,  
[37] One of these days turn that [4] train around  
And [1] go back to [57] my home [1] town.

[1] One more place I'd [57] like to be,  
One more place I'd [1] like to see,  
To [37] watch them old Blue Ridge [4] Mountains climb,  
When I [1] ride old [57] number [1] nine.

[1] When I die Lord, [57] Bury me deep,  
Down at the end of [1] Chestnut street,  
Where [37] I can hear old [4] number nine  
As [1] she comes [57] down the [1] line.

[1] Freight train, Freight train, [57] goin' so fast,  
Freight train, Freight train, [1] goin' so fast,  
[37] Please don't tell what [4] train I'm on  
So [1] they won't [57] know where I'm [1] gone.

Video - Elizabeth Cotten - <http://www.youtube.com/watch?v=43-UUeCa6Jw>

## Freight Train Elizabeth Cotten - Ukulele - Key C

TablEdited by Tony Anthonisen - freight train.tef

1 Pickup C G7 C

2 3 2 4 5

6 E7 F C G7 C

7 8 9

# Eight More Miles to Louisville - 5 Chords - 4/4

## Eight More Miles to Louisville Grandpa Jones

TabEdited by Tony Anthoni

VERSE

C G C F C G C C G

C F C G F C

G C G C F C G

CHORUS  
C

C C F C

D G F

C G C G C F

C G C

## Eight More Miles to Louisville

Grandpa Jones

[C] I've travelled [G<sup>7</sup>] o<sup>1</sup>re this [C] country [F] wide, [C] seeking [G<sup>7</sup>] fortune [C] fair  
[C] Up and [G<sup>7</sup>] down the [C] two coast [F] lines, I've [C] travelled [G<sup>7</sup>] everywhere  
From [F] Portland East to [C] Portland West and back across the [G<sup>7</sup>] line  
I<sup>1</sup>m [C] going [G<sup>7</sup>] down to the [C] place that<sup>1</sup>s [F] best, the [C] old home [G<sup>7</sup>] town of [C] mine

Chorus: [C] Eight more miles and Louisville will [F] come into my [C] view  
Eight more miles on this old road and I<sup>1</sup>ll [D] never more be [G<sup>7</sup>] blue  
I [F] knew someday that [C] I<sup>1</sup>d come back, I knew it from the [G<sup>7</sup>] start  
[C] Eight more [G<sup>7</sup>] miles to [C] Louis [F] ville, the [C] hometown [G<sup>7</sup>] of my [C] heart

[C] There<sup>1</sup>s got to [G<sup>7</sup>] be a [C] gal some [F] where that [C] you<sup>1</sup>d like [G<sup>7</sup>] best of [C] all  
Now [C] mine is [G<sup>7</sup>] down in [C] Louis [F] ville, she<sup>1</sup>s [C] long and she<sup>1</sup>s [G<sup>7</sup>] tall  
And [F] she<sup>1</sup>s the kind that [C] you can<sup>1</sup>t find a-ramblin<sup>1</sup> through the [G<sup>7</sup>] land  
I<sup>1</sup>m [C] going [G<sup>7</sup>] there this [C] very [F] day to [C] win her [G<sup>7</sup>] heart and [C] hand

Chorus: [C] Eight more miles and Louisville will [F] come into my [C] view  
Eight more miles on this old road and I<sup>1</sup>ll [D] never more be [G<sup>7</sup>] blue  
I [F] knew someday that [C] I<sup>1</sup>d come back, I knew it from the [G<sup>7</sup>] start  
[C] Eight more [G<sup>7</sup>] miles to [C] Louis [F] ville, the [C] hometown [G<sup>7</sup>] of my [C] heart

Now [C] I can [G<sup>7</sup>] picture [C] in my [F] mind the [C] place we<sup>1</sup>ll [G<sup>7</sup>] call our [C] home  
[C] A humble [G<sup>7</sup>] little [C] hut for [F] two, we<sup>1</sup>ll [C] never want to [G<sup>7</sup>] roam  
A [F] place that<sup>1</sup>s right for [C] that love site is in those bluegrass [G<sup>7</sup>] hills  
Where [C] gently [G<sup>7</sup>] rolls the [C] Ohi [F] o near a [C] place called [G<sup>7</sup>] Louis [C] ville

Chorus: [C] Eight more miles and Louisville will [F] come into my [C] view  
Eight more miles on this old road and I<sup>1</sup>ll [D] never more be [G<sup>7</sup>] blue  
I [F] knew someday that [C] I<sup>1</sup>d come back, I knew it from the [G<sup>7</sup>] start  
[C] Eight more [G<sup>7</sup>] miles to [C] Louis [F] ville, the [C] hometown [G<sup>7</sup>] of my [C] heart

Video - Sam Bush - <http://www.youtube.com/watch?v=666vgJ1l1lQ>