

# Old Joe Clark

## Ukulele - Traditional - Key A

TabEdited by Tony Anthonisen - A Uke - Old Joe Clark - Easier.tef/pdf

Pickup  
A  
A Part

4/4  
1 2 | 0 2 3 2 | 0 2 1 1 2 | 0 2 3 2

E A D E7

0 0 1 2 | 0 2 3 2 | 0 2 1 1 | 0 4 2 2

1. A 2A A  
B Part

0 0 1 2 | 0 0 | 0 0 0 0 | 0 2 1 | 0 0 2 0

G A E7 1. A

3 3 | 0 0 0 0 | 0 2 1 | 0 4 2 2 | 0 0

2. A

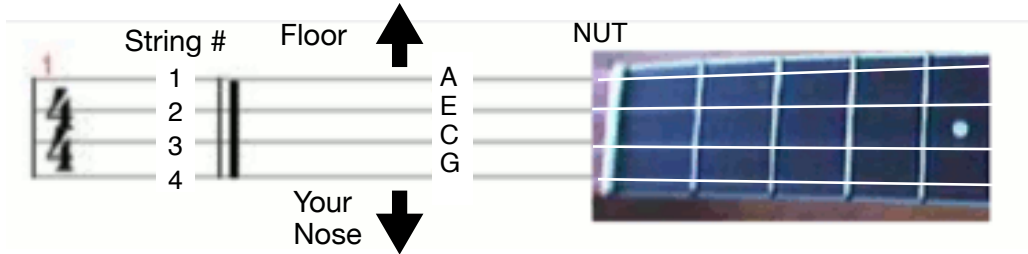
0 0

Played on a Martin soprano ukulele - <https://youtu.be/28x8AShX6s4>

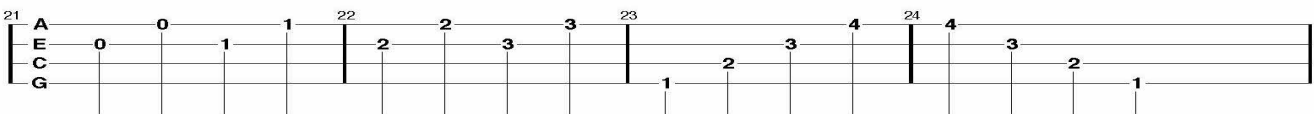
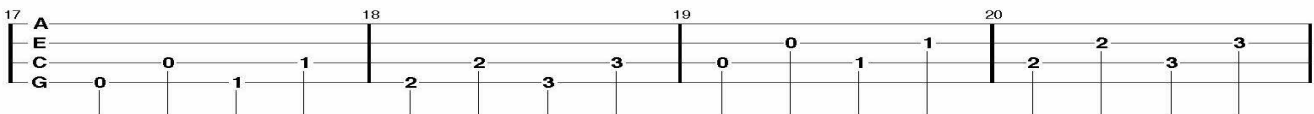
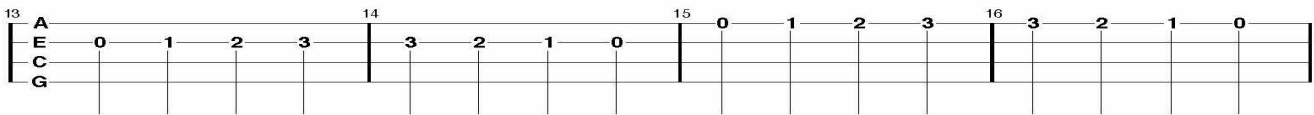
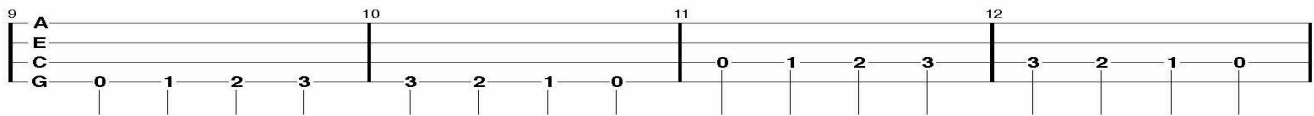
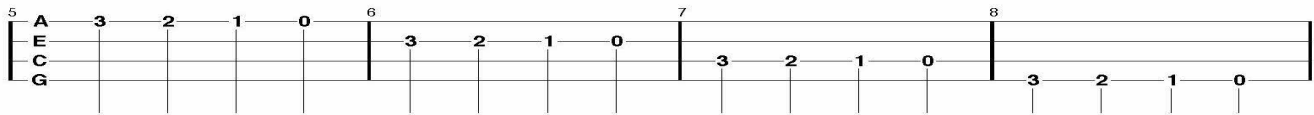
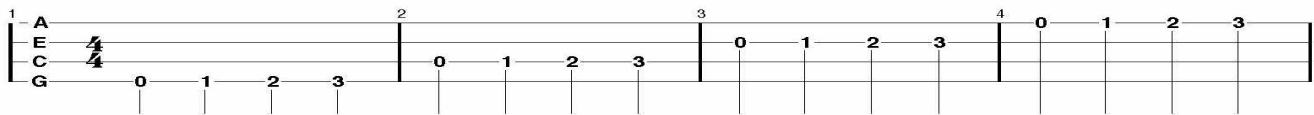
# How To Play Ukulele From TAB

© Tony Anthonisen - 2023

1. Here is a graphic of TAB lines next to the uke fretboard and the corresponding uke strings.
2. TAB Practice - **The Sweet Spots** — Pick above the sound hole - **Strum** where neck meets the body



3. Click on this link & play TAB for ALL Fiddle Tunes in this folder >>> [How to Read and Play Tab.](#)
4. Tremendous TAB Reference - <http://ukulelehunt.com/how-to-read-ukulele-tab/> - Be sure to see Part One - The Basics. The neat TAB to fretboard graphic above came from The Basics.



## C Scale in TAB

- ☑ Top line on this first sheet is the entire C scale on the ukulele C string.
- ☑ It is easy to see the note spacing when all the notes are on one string.
- ☑ Note spacing = whole – whole – half – whole – whole – whole – half = W W H W W W H

## Scale Exercises in TAB

**Ukulele TAB Scales**  
C Scale - whole, whole, half whole, whole, whole, whole half

TabEdited by Tony Anthonisen

1 A  
E 4  
C 4 0 2 4 5 7 9 11 12 12 11 9 7 5 4 2 0  
G

5 A  
E 0 1 3 0 2 3 3 2 0 3 1 0 2 0  
C 0 2 0 1 3 0 2 3 3 2 0 3 1 0 2 0  
G

9 A  
E 0 0 1 1 3 3 0 0 2 2 3 3  
C 0 0 2 2 0 0 1 1 3 3 0 0 2 2 3 3  
G

13 A  
E 3 3 2 2 0 0 3 3 1 1 0 0 2 2 0 0  
C 3 3 2 2 0 0 3 3 1 1 0 0 2 2 0 0  
G

17 A  
E 0 0 1 1 3 3 0 0 2 2 3 3 3 3 2 2 0 0 3 3 1 1 0 0 2 2 0 0  
C 0 0 2 2 0 0 1 1 3 3 0 0 2 2 3 3 3 3 2 2 0 0 3 3 1 1 0 0 2 2 0 0  
G